

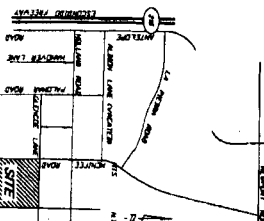
# TRACT MAP 26798-5

IN THE UNINCORPORATED TERRITORY OF INDIAN COUNTY, STATE OF CALIFORNIA  
 BEING A SUBDIVISION OF A PORTION OF THE SOUTHWEST 1/4 ACRES OF THE EAST HALF OF THE NORTHWEST QUARTER OF SECTION 11, TOWNSHIP 6 SOUTH, RANGE 3 WEST, SAN BERNARDINO COUNTY, STATE OF CALIFORNIA

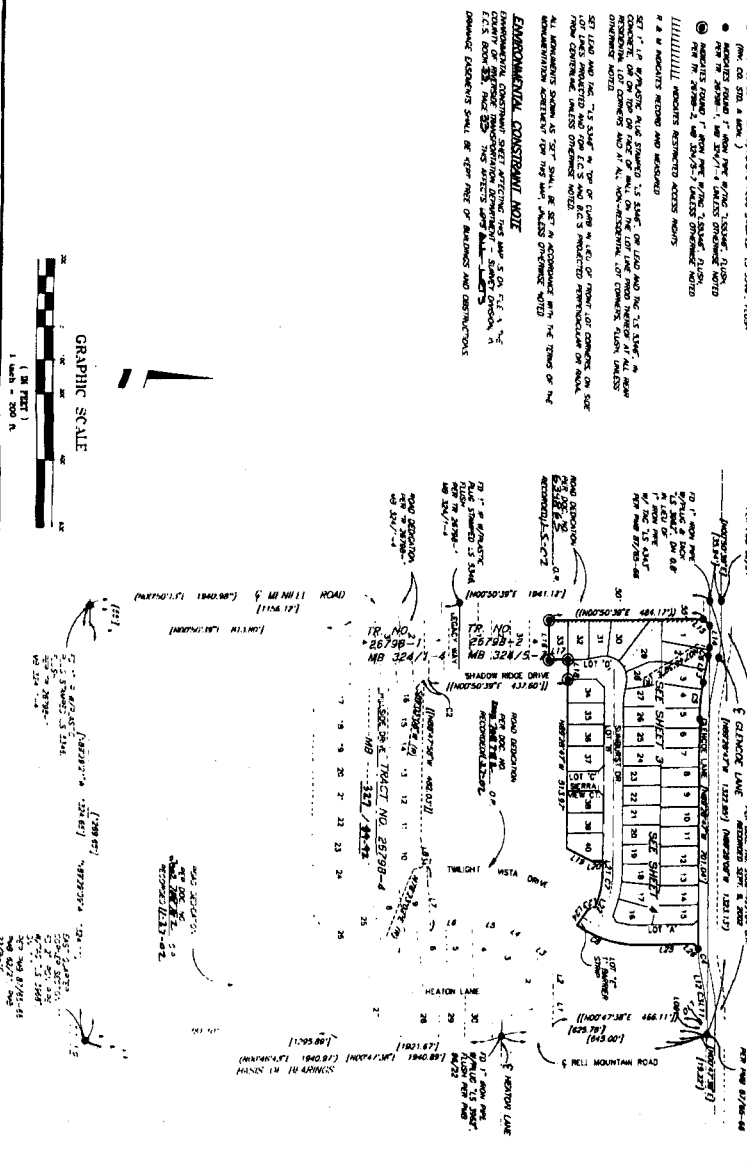
SEPTEMBER, 2001

THE KEITH COMPANIES, INC.

P.M. 15840  
 P.M.B. 87/85-66



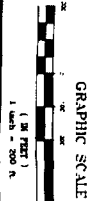
VICINITY MAP



**BASES OF BEARINGS**  
 THE EAST LINE OF THE ADJACENT QUARTER OF SECTION 11, TOWNSHIP 6 SOUTH, RANGE 3 WEST, SAN BERNARDINO COUNTY, BEING NORTH 87° 52' 00" WEST 1/4 SECTION 11, TOWNSHIP 6 SOUTH, RANGE 3 WEST, SAN BERNARDINO COUNTY, STATE OF CALIFORNIA.  
 THE WEST LINE OF THE ADJACENT QUARTER OF SECTION 11, TOWNSHIP 6 SOUTH, RANGE 3 WEST, SAN BERNARDINO COUNTY, BEING NORTH 87° 52' 00" WEST 1/4 SECTION 11, TOWNSHIP 6 SOUTH, RANGE 3 WEST, SAN BERNARDINO COUNTY, STATE OF CALIFORNIA.

**SUBTRACTORS' NOTES**  
 THE SUBTRACTORS' NOTES ARE AS FOLLOWS:  
 (1) THE ADJACENT RECORD AND RELATED DATA PER TRACT 26798-4 AND 26798-5.  
 (2) THE ADJACENT RECORD AND RELATED DATA PER TRACT 26798-1 AND 26798-2.  
 (3) THE ADJACENT RECORD AND RELATED DATA PER TRACT 26798-3 AND 26798-4.  
 (4) THE ADJACENT RECORD AND RELATED DATA PER TRACT 26798-5 AND 26798-6.  
 (5) THE ADJACENT RECORD AND RELATED DATA PER TRACT 26798-7 AND 26798-8.  
 (6) THE ADJACENT RECORD AND RELATED DATA PER TRACT 26798-9 AND 26798-10.  
 (7) THE ADJACENT RECORD AND RELATED DATA PER TRACT 26798-11 AND 26798-12.  
 (8) THE ADJACENT RECORD AND RELATED DATA PER TRACT 26798-13 AND 26798-14.  
 (9) THE ADJACENT RECORD AND RELATED DATA PER TRACT 26798-15 AND 26798-16.  
 (10) THE ADJACENT RECORD AND RELATED DATA PER TRACT 26798-17 AND 26798-18.  
 (11) THE ADJACENT RECORD AND RELATED DATA PER TRACT 26798-19 AND 26798-20.  
 (12) THE ADJACENT RECORD AND RELATED DATA PER TRACT 26798-21 AND 26798-22.  
 (13) THE ADJACENT RECORD AND RELATED DATA PER TRACT 26798-23 AND 26798-24.  
 (14) THE ADJACENT RECORD AND RELATED DATA PER TRACT 26798-25 AND 26798-26.  
 (15) THE ADJACENT RECORD AND RELATED DATA PER TRACT 26798-27 AND 26798-28.  
 (16) THE ADJACENT RECORD AND RELATED DATA PER TRACT 26798-29 AND 26798-30.  
 (17) THE ADJACENT RECORD AND RELATED DATA PER TRACT 26798-31 AND 26798-32.

**EMPHATIC CONSTRUCTION NOTE**  
 THE ADJACENT RECORD AND RELATED DATA PER TRACT 26798-4 AND 26798-5.  
 THE ADJACENT RECORD AND RELATED DATA PER TRACT 26798-1 AND 26798-2.  
 THE ADJACENT RECORD AND RELATED DATA PER TRACT 26798-3 AND 26798-4.  
 THE ADJACENT RECORD AND RELATED DATA PER TRACT 26798-5 AND 26798-6.  
 THE ADJACENT RECORD AND RELATED DATA PER TRACT 26798-7 AND 26798-8.  
 THE ADJACENT RECORD AND RELATED DATA PER TRACT 26798-9 AND 26798-10.  
 THE ADJACENT RECORD AND RELATED DATA PER TRACT 26798-11 AND 26798-12.  
 THE ADJACENT RECORD AND RELATED DATA PER TRACT 26798-13 AND 26798-14.  
 THE ADJACENT RECORD AND RELATED DATA PER TRACT 26798-15 AND 26798-16.  
 THE ADJACENT RECORD AND RELATED DATA PER TRACT 26798-17 AND 26798-18.  
 THE ADJACENT RECORD AND RELATED DATA PER TRACT 26798-19 AND 26798-20.  
 THE ADJACENT RECORD AND RELATED DATA PER TRACT 26798-21 AND 26798-22.  
 THE ADJACENT RECORD AND RELATED DATA PER TRACT 26798-23 AND 26798-24.  
 THE ADJACENT RECORD AND RELATED DATA PER TRACT 26798-25 AND 26798-26.  
 THE ADJACENT RECORD AND RELATED DATA PER TRACT 26798-27 AND 26798-28.  
 THE ADJACENT RECORD AND RELATED DATA PER TRACT 26798-29 AND 26798-30.  
 THE ADJACENT RECORD AND RELATED DATA PER TRACT 26798-31 AND 26798-32.



GRAPHIC SCALE  
 (IN FEET)  
 1 inch = 200 ft.

LOT NO.	ACRES	AREA	PERCENTAGE
1	0.0000	0.0000	0.00%
2	0.0000	0.0000	0.00%
3	0.0000	0.0000	0.00%
4	0.0000	0.0000	0.00%
5	0.0000	0.0000	0.00%
6	0.0000	0.0000	0.00%
7	0.0000	0.0000	0.00%
8	0.0000	0.0000	0.00%
9	0.0000	0.0000	0.00%
10	0.0000	0.0000	0.00%
11	0.0000	0.0000	0.00%
12	0.0000	0.0000	0.00%
13	0.0000	0.0000	0.00%
14	0.0000	0.0000	0.00%
15	0.0000	0.0000	0.00%
16	0.0000	0.0000	0.00%
17	0.0000	0.0000	0.00%
18	0.0000	0.0000	0.00%
19	0.0000	0.0000	0.00%
20	0.0000	0.0000	0.00%
21	0.0000	0.0000	0.00%
22	0.0000	0.0000	0.00%
23	0.0000	0.0000	0.00%
24	0.0000	0.0000	0.00%
25	0.0000	0.0000	0.00%
26	0.0000	0.0000	0.00%
27	0.0000	0.0000	0.00%
28	0.0000	0.0000	0.00%
29	0.0000	0.0000	0.00%
30	0.0000	0.0000	0.00%
31	0.0000	0.0000	0.00%
32	0.0000	0.0000	0.00%
TOTAL	0.0000	0.0000	0.00%