

TRACT MAP 26798-4

IN THE UNINCORPORATED TERRITORY OF RIVERSIDE COUNTY, STATE OF CALIFORNIA
 BEING A SUBDIVISION OF A PORTION OF THE QUARTER 29 ACRES OF THE EAST HALF OF THE NORTHEAST QUARTER OF SECTION 11, TOWNSHIP 6 SOUTH, RANGE 3 WEST, SAN BERNARDINO MERIDIAN, COUNTY OF RIVERSIDE, STATE OF CALIFORNIA.
 MAY, 2001
 BOUNDARY & INDEX SHEET THE KETH COMPANIES, INC.

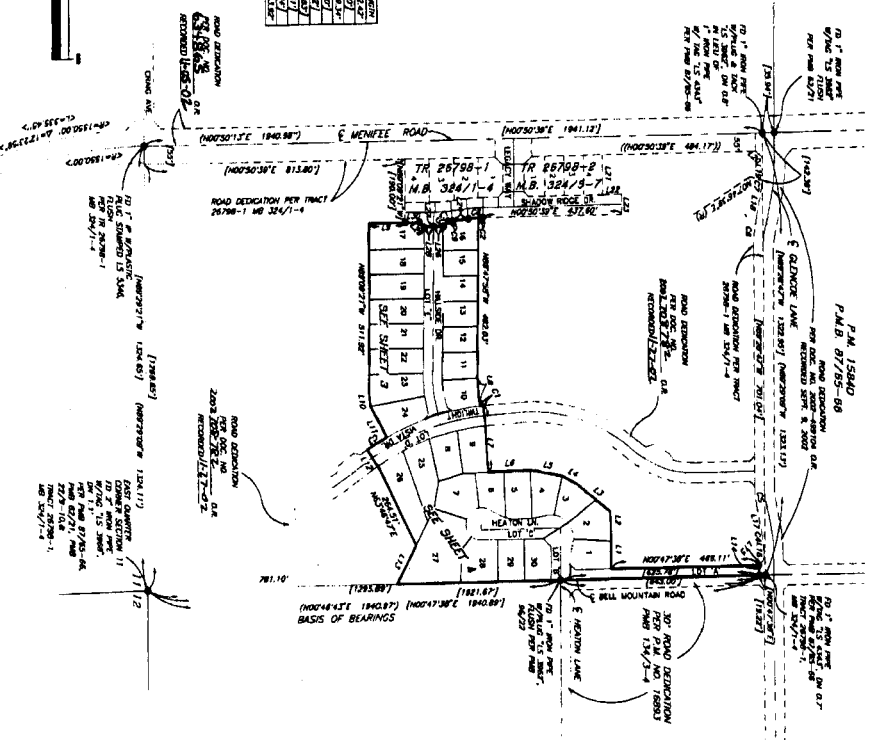
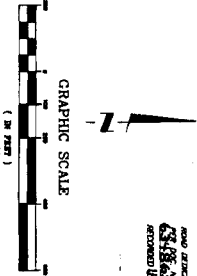
BASES OF BEARINGS
 BEARING DATA FOR ALL LINES IS BASED UPON THE 1983 NAD 83 DATUM. ALL BEARINGS ARE GIVEN AS TRUE BEARINGS UNLESS OTHERWISE NOTED. THE BEARING DATA FOR THIS TRACT MAP IS BASED UPON THE 1983 NAD 83 DATUM. ALL BEARINGS ARE GIVEN AS TRUE BEARINGS UNLESS OTHERWISE NOTED.

SUBDIVISION NOTES
 1. THE TRACT MAP IS BASED UPON THE 1983 NAD 83 DATUM.
 2. THE TRACT MAP IS BASED UPON THE 1983 NAD 83 DATUM.
 3. THE TRACT MAP IS BASED UPON THE 1983 NAD 83 DATUM.
 4. THE TRACT MAP IS BASED UPON THE 1983 NAD 83 DATUM.
 5. THE TRACT MAP IS BASED UPON THE 1983 NAD 83 DATUM.
 6. THE TRACT MAP IS BASED UPON THE 1983 NAD 83 DATUM.
 7. THE TRACT MAP IS BASED UPON THE 1983 NAD 83 DATUM.
 8. THE TRACT MAP IS BASED UPON THE 1983 NAD 83 DATUM.
 9. THE TRACT MAP IS BASED UPON THE 1983 NAD 83 DATUM.
 10. THE TRACT MAP IS BASED UPON THE 1983 NAD 83 DATUM.

ENVIRONMENTAL CONSTRAINT NOTE
 THE TRACT MAP IS BASED UPON THE 1983 NAD 83 DATUM. ALL BEARINGS ARE GIVEN AS TRUE BEARINGS UNLESS OTHERWISE NOTED. THE BEARING DATA FOR THIS TRACT MAP IS BASED UPON THE 1983 NAD 83 DATUM. ALL BEARINGS ARE GIVEN AS TRUE BEARINGS UNLESS OTHERWISE NOTED.

LINE NO.	BEARING	DISTANCE
1	N 89° 12' 30" W	12.00
2	S 89° 12' 30" E	12.00
3	N 89° 12' 30" W	12.00
4	S 89° 12' 30" E	12.00
5	N 89° 12' 30" W	12.00
6	S 89° 12' 30" E	12.00
7	N 89° 12' 30" W	12.00
8	S 89° 12' 30" E	12.00
9	N 89° 12' 30" W	12.00
10	S 89° 12' 30" E	12.00
11	N 89° 12' 30" W	12.00
12	S 89° 12' 30" E	12.00
13	N 89° 12' 30" W	12.00
14	S 89° 12' 30" E	12.00
15	N 89° 12' 30" W	12.00
16	S 89° 12' 30" E	12.00
17	N 89° 12' 30" W	12.00
18	S 89° 12' 30" E	12.00
19	N 89° 12' 30" W	12.00
20	S 89° 12' 30" E	12.00
21	N 89° 12' 30" W	12.00
22	S 89° 12' 30" E	12.00
23	N 89° 12' 30" W	12.00
24	S 89° 12' 30" E	12.00
25	N 89° 12' 30" W	12.00
26	S 89° 12' 30" E	12.00
27	N 89° 12' 30" W	12.00
28	S 89° 12' 30" E	12.00
29	N 89° 12' 30" W	12.00
30	S 89° 12' 30" E	12.00
31	N 89° 12' 30" W	12.00
32	S 89° 12' 30" E	12.00
33	N 89° 12' 30" W	12.00
34	S 89° 12' 30" E	12.00
35	N 89° 12' 30" W	12.00
36	S 89° 12' 30" E	12.00
37	N 89° 12' 30" W	12.00
38	S 89° 12' 30" E	12.00
39	N 89° 12' 30" W	12.00
40	S 89° 12' 30" E	12.00
41	N 89° 12' 30" W	12.00
42	S 89° 12' 30" E	12.00
43	N 89° 12' 30" W	12.00
44	S 89° 12' 30" E	12.00
45	N 89° 12' 30" W	12.00
46	S 89° 12' 30" E	12.00
47	N 89° 12' 30" W	12.00
48	S 89° 12' 30" E	12.00
49	N 89° 12' 30" W	12.00
50	S 89° 12' 30" E	12.00
51	N 89° 12' 30" W	12.00
52	S 89° 12' 30" E	12.00
53	N 89° 12' 30" W	12.00
54	S 89° 12' 30" E	12.00
55	N 89° 12' 30" W	12.00
56	S 89° 12' 30" E	12.00
57	N 89° 12' 30" W	12.00
58	S 89° 12' 30" E	12.00
59	N 89° 12' 30" W	12.00
60	S 89° 12' 30" E	12.00
61	N 89° 12' 30" W	12.00
62	S 89° 12' 30" E	12.00
63	N 89° 12' 30" W	12.00
64	S 89° 12' 30" E	12.00
65	N 89° 12' 30" W	12.00
66	S 89° 12' 30" E	12.00
67	N 89° 12' 30" W	12.00
68	S 89° 12' 30" E	12.00
69	N 89° 12' 30" W	12.00
70	S 89° 12' 30" E	12.00
71	N 89° 12' 30" W	12.00
72	S 89° 12' 30" E	12.00
73	N 89° 12' 30" W	12.00
74	S 89° 12' 30" E	12.00
75	N 89° 12' 30" W	12.00
76	S 89° 12' 30" E	12.00
77	N 89° 12' 30" W	12.00
78	S 89° 12' 30" E	12.00
79	N 89° 12' 30" W	12.00
80	S 89° 12' 30" E	12.00
81	N 89° 12' 30" W	12.00
82	S 89° 12' 30" E	12.00
83	N 89° 12' 30" W	12.00
84	S 89° 12' 30" E	12.00
85	N 89° 12' 30" W	12.00
86	S 89° 12' 30" E	12.00
87	N 89° 12' 30" W	12.00
88	S 89° 12' 30" E	12.00
89	N 89° 12' 30" W	12.00
90	S 89° 12' 30" E	12.00
91	N 89° 12' 30" W	12.00
92	S 89° 12' 30" E	12.00
93	N 89° 12' 30" W	12.00
94	S 89° 12' 30" E	12.00
95	N 89° 12' 30" W	12.00
96	S 89° 12' 30" E	12.00
97	N 89° 12' 30" W	12.00
98	S 89° 12' 30" E	12.00
99	N 89° 12' 30" W	12.00
100	S 89° 12' 30" E	12.00

LINE NO.	BEARING	DISTANCE
1	N 89° 12' 30" W	12.00
2	S 89° 12' 30" E	12.00
3	N 89° 12' 30" W	12.00
4	S 89° 12' 30" E	12.00
5	N 89° 12' 30" W	12.00
6	S 89° 12' 30" E	12.00
7	N 89° 12' 30" W	12.00
8	S 89° 12' 30" E	12.00
9	N 89° 12' 30" W	12.00
10	S 89° 12' 30" E	12.00
11	N 89° 12' 30" W	12.00
12	S 89° 12' 30" E	12.00
13	N 89° 12' 30" W	12.00
14	S 89° 12' 30" E	12.00
15	N 89° 12' 30" W	12.00
16	S 89° 12' 30" E	12.00
17	N 89° 12' 30" W	12.00
18	S 89° 12' 30" E	12.00
19	N 89° 12' 30" W	12.00
20	S 89° 12' 30" E	12.00
21	N 89° 12' 30" W	12.00
22	S 89° 12' 30" E	12.00
23	N 89° 12' 30" W	12.00
24	S 89° 12' 30" E	12.00
25	N 89° 12' 30" W	12.00
26	S 89° 12' 30" E	12.00
27	N 89° 12' 30" W	12.00
28	S 89° 12' 30" E	12.00
29	N 89° 12' 30" W	12.00
30	S 89° 12' 30" E	12.00
31	N 89° 12' 30" W	12.00
32	S 89° 12' 30" E	12.00
33	N 89° 12' 30" W	12.00
34	S 89° 12' 30" E	12.00
35	N 89° 12' 30" W	12.00
36	S 89° 12' 30" E	12.00
37	N 89° 12' 30" W	12.00
38	S 89° 12' 30" E	12.00
39	N 89° 12' 30" W	12.00
40	S 89° 12' 30" E	12.00
41	N 89° 12' 30" W	12.00
42	S 89° 12' 30" E	12.00
43	N 89° 12' 30" W	12.00
44	S 89° 12' 30" E	12.00
45	N 89° 12' 30" W	12.00
46	S 89° 12' 30" E	12.00
47	N 89° 12' 30" W	12.00
48	S 89° 12' 30" E	12.00
49	N 89° 12' 30" W	12.00
50	S 89° 12' 30" E	12.00
51	N 89° 12' 30" W	12.00
52	S 89° 12' 30" E	12.00
53	N 89° 12' 30" W	12.00
54	S 89° 12' 30" E	12.00
55	N 89° 12' 30" W	12.00
56	S 89° 12' 30" E	12.00
57	N 89° 12' 30" W	12.00
58	S 89° 12' 30" E	12.00
59	N 89° 12' 30" W	12.00
60	S 89° 12' 30" E	12.00
61	N 89° 12' 30" W	12.00
62	S 89° 12' 30" E	12.00
63	N 89° 12' 30" W	12.00
64	S 89° 12' 30" E	12.00
65	N 89° 12' 30" W	12.00
66	S 89° 12' 30" E	12.00
67	N 89° 12' 30" W	12.00
68	S 89° 12' 30" E	12.00
69	N 89° 12' 30" W	12.00
70	S 89° 12' 30" E	12.00
71	N 89° 12' 30" W	12.00
72	S 89° 12' 30" E	12.00
73	N 89° 12' 30" W	12.00
74	S 89° 12' 30" E	12.00
75	N 89° 12' 30" W	12.00
76	S 89° 12' 30" E	12.00
77	N 89° 12' 30" W	12.00
78	S 89° 12' 30" E	12.00
79	N 89° 12' 30" W	12.00
80	S 89° 12' 30" E	12.00
81	N 89° 12' 30" W	12.00
82	S 89° 12' 30" E	12.00
83	N 89° 12' 30" W	12.00
84	S 89° 12' 30" E	12.00
85	N 89° 12' 30" W	12.00
86	S 89° 12' 30" E	12.00
87	N 89° 12' 30" W	12.00
88	S 89° 12' 30" E	12.00
89	N 89° 12' 30" W	12.00
90	S 89° 12' 30" E	12.00
91	N 89° 12' 30" W	12.00
92	S 89° 12' 30" E	12.00
93	N 89° 12' 30" W	12.00
94	S 89° 12' 30" E	12.00
95	N 89° 12' 30" W	12.00
96	S 89° 12' 30" E	12.00
97	N 89° 12' 30" W	12.00
98	S 89° 12' 30" E	12.00
99	N 89° 12' 30" W	12.00
100	S 89° 12' 30" E	12.00



2001-744906
 ORIGINAL
 SHEET 2 OF 4 SHEETS